

CHEAHA

[Cleburne County]

Phone: (205) 488-5111

Email: cheaha.stateparklodge@dcnr.alabama.gov

Set GPS to W85 812780°, N 33 474240°

TYPE: Public State Park. pets welcome.

DIRECTIONS: good paved interior rds. good paved access rd. (North of town) From Lineville, N 17 mi on SR-49 to SR-281, W 3 mi (R); or From Jct of I-20 & US-431 (exit 191), S 3.6 mi on US-431 to SR-281, SW 13.3 mi on SR-281S (R).

SITES: 73 available: 73 gravel sites.no patios, mostly shaded, 14 day max stay, 39 pull-thrus (25 x 60), Back-ins (25 x 40), no Side-by-side hookups, 73 full hookups, (30/50 amps), (16 rental units), Table at site, BBQ at site, WiFi Hotspot.

FACILITIES: restrooms and showers, public phone, Groceries, firewood, restaurant.

SERVICES: church services.

RECREATION: Swimming pool, Cheaha Lake, lake, swimming, fishing, enclosed rec hall, playground, pavilion, paddle boats, nature trails.

OPEN: Open all year.

RATES: \$21 (Last year's).

Visa, MasterCard, American Express, Debit Card.

Cheaha

State Park

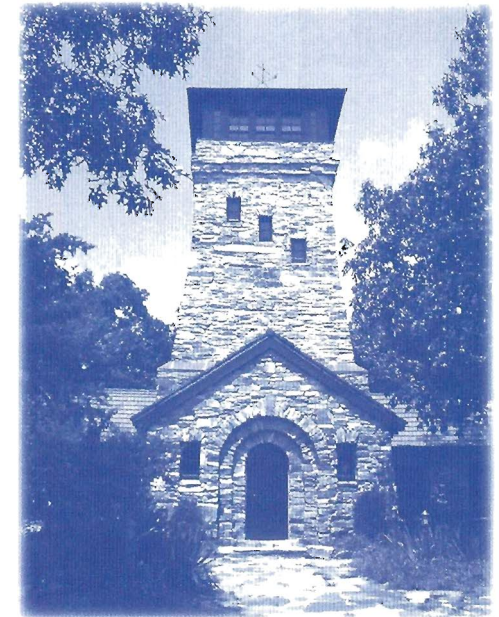
Alabama's Highest Point



Cleburne County

Access to Alabama State Parks and State Park programs is available without regard to race, color, national origin, sex or disability.

Cheaha State Park provides accommodations for handicapped guests; wheelchair access to restaurant is also provided.

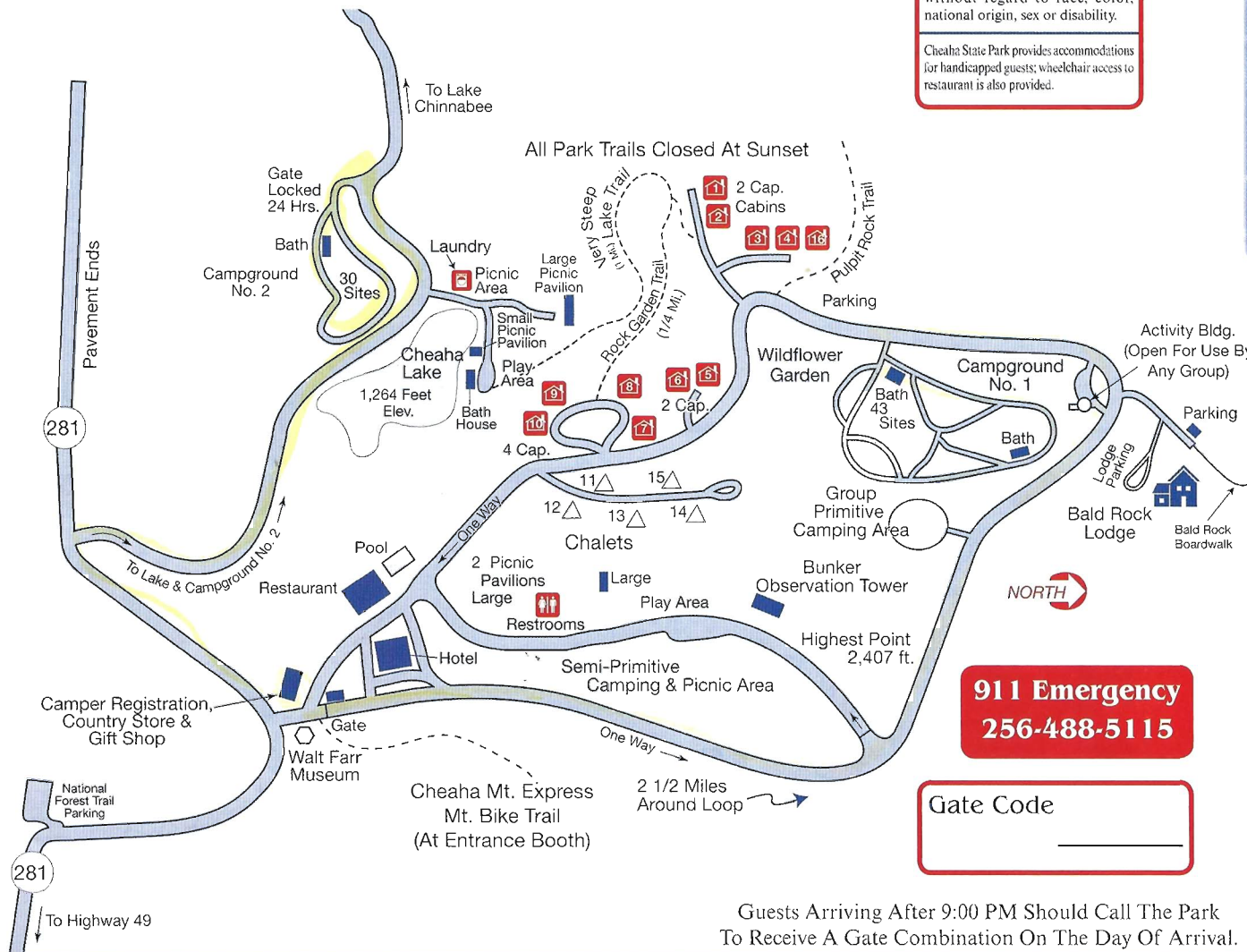


For Information and Reservations, Contact:

Motel, Cabins & Group Lodge and Restaurant
 Hwy. 281
 2141 Bunker Loop
 Delta, AL 36258
(256) 488-5115

PARK - Campground, Store, Ranger's & Superintendent's Office
 19644 Hwy. 281
 Delta, AL 36258
(256) 488-5111

For Reservation Information
 Call 1-800-846-2654 (Lodging Only)
 1-800-ALA-PARK (Nationwide)
 Press: 1 For Cheaha - 1 For Lodging • 2 For Store/Camping



Guests Arriving After 9:00 PM Should Call The Park To Receive A Gate Combination On The Day Of Arrival.

All Rights Reserved ©

Rules & Regulations

- Place your camping permit card under the clips on the campsite number sign.
- Vehicles must be parked on the drive for the campsite.
- Only one camping unit per site.
- Each rented campsite must be occupied after rented.
- Towels are not available for pool or lake.
- Fires are permitted only in grills and fire rings.
- To check-out, you must come to the Camp Store.
- Check-out time is 11 AM. If you wish to remain longer, please check at the country store.
- Motorcycles, motorbikes or other small motorized vehicles are restricted to roadways and must be licensed.
- **Pets are allowed** in campground, some cabins and in picnic areas, but must be kept on a leash no longer than 6 feet or under positive physical restraint. **Pets are not allowed** in motel rooms.
- Please deposit your garbage and recyclable aluminum cans in the receptacles provided.
- Trees, shrubs, plants and wildflowers shall not be defaced, injured or removed. **NO LANTERNS ON THE TREES.**
- **QUIET TIME IS 10 PM TO 6 AM.**



Facilities

LODGE • The restaurant-motel complex has been recently remodeled and contains a 75-seat restaurant, 30 motel rooms, a meeting room, pool and observation deck. The view from the restaurant and deck is spectacular.

CAMPING • The park has 73 improved sites with bathhouses, water, sewer and electricity in two areas. We also have group camping and semi-primitive camp areas.

CHALETS AND CABINS • The park has 5 chalets and 11 rustic cabins. The cabins and chalets are furnished for light housekeeping with linens and kitchen utensils.

HIKING TRAILS • Cheaha features several excellent trails within the park, including the Doug Ghee Accessible Trail. The Doug Ghee Trail is a 1,520-foot ADA accessible trail to a breathtaking overlook. Cheaha also has access to the Talladega National Forest Trails and Cheaha contains part of the 134-mile Pinhoti Trail.

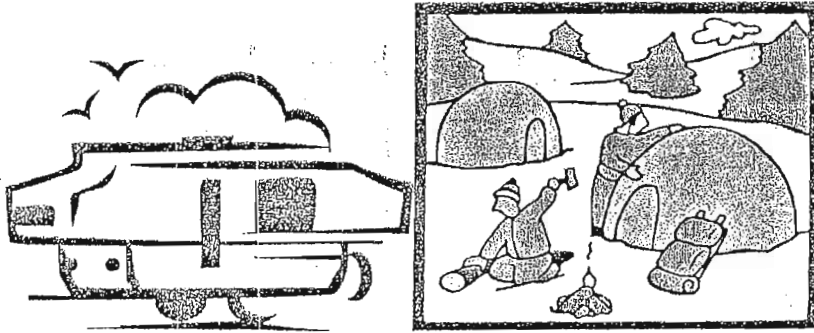
MOUNTAIN BIKING • The Cheaha Mountain Express is an excellent 6.2-mile trail that varies from easy to technical.

PICNIC • Cheaha features two picnic areas with pavilions, grills and small playgrounds. One area also has a 6-acre lake for fishing and swimming.

BALD ROCK GROUP LODGE • Offers a glimpse back in time, yet has all modern accommodations. Completely renovated, Bald Rock Lodge has twelve bedrooms and will sleep approximately thirty-five. The Bald Rock Great Room accommodates approximately one hundred. The kitchen is completely operational and has all commercial appliances. Bald Rock Lodge is the perfect place for weddings, family reunions, church outings and any other business activities.

Cheaha State Park sits dramatically atop Alabama's highest point. Cheaha Mountain is a part of the Appalachians. The view of the Talladega National Forest is breathtaking from 2,407 ft. Cheaha State Park is comprised of 2,799 acres. Cheaha is located 25 miles south of Anniston, 25 miles north of Talladega, 17 miles east of Munford and 17 miles north of Lineville.

Cheaha State Park is one of the oldest State Parks in Alabama. The official opening date for Cheaha State Park was June 7, 1939. The groundwork for the park began by the Civilian Conservation Corp.



Cheaha State Park
Alabama's Highest Point
Alabama's oldest continuously open state park!
1-800-610-5801

Welcome Camper

Thank you for supporting Alabama State Parks by staying with us. We appreciate your business.

Each night our computer randomly assigns our camp sites. (Requested sites are accommodated when possible but not guaranteed). Changing sites will be accommodated if all sites are not already assigned. We **must** know who is registered for what campsite. This is for your safety. Any guest that is not in the assigned site will be moved to the assigned site.

Most reservations can be made on line at Alapark.com. This helps us to serve you faster. Please give us the size and type of your camping unit when you make your reservation.

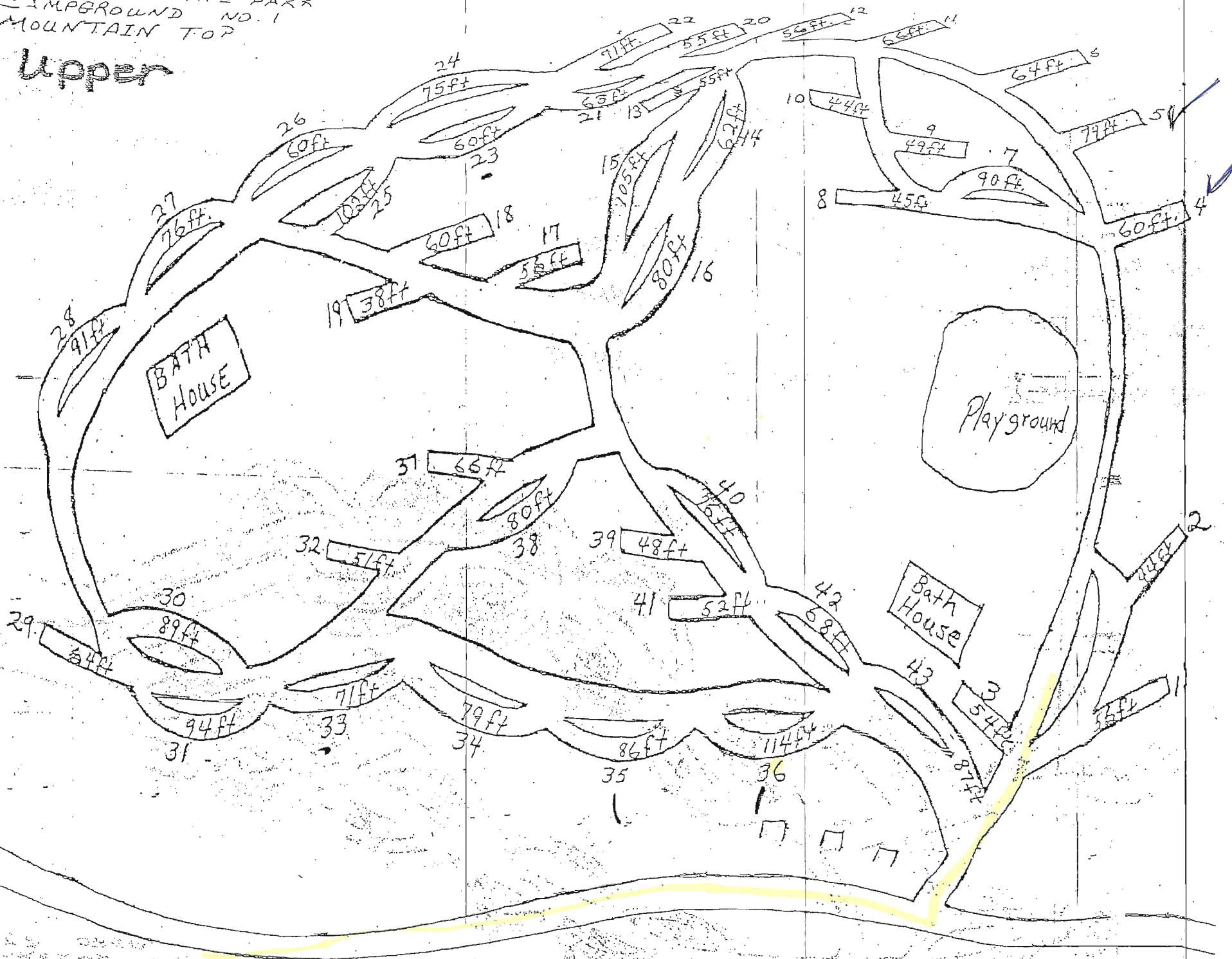
This will enable us to accommodate you better.

Incases of inclement weather the bathhouses in the improved campgrounds will serve as your storm shelter.

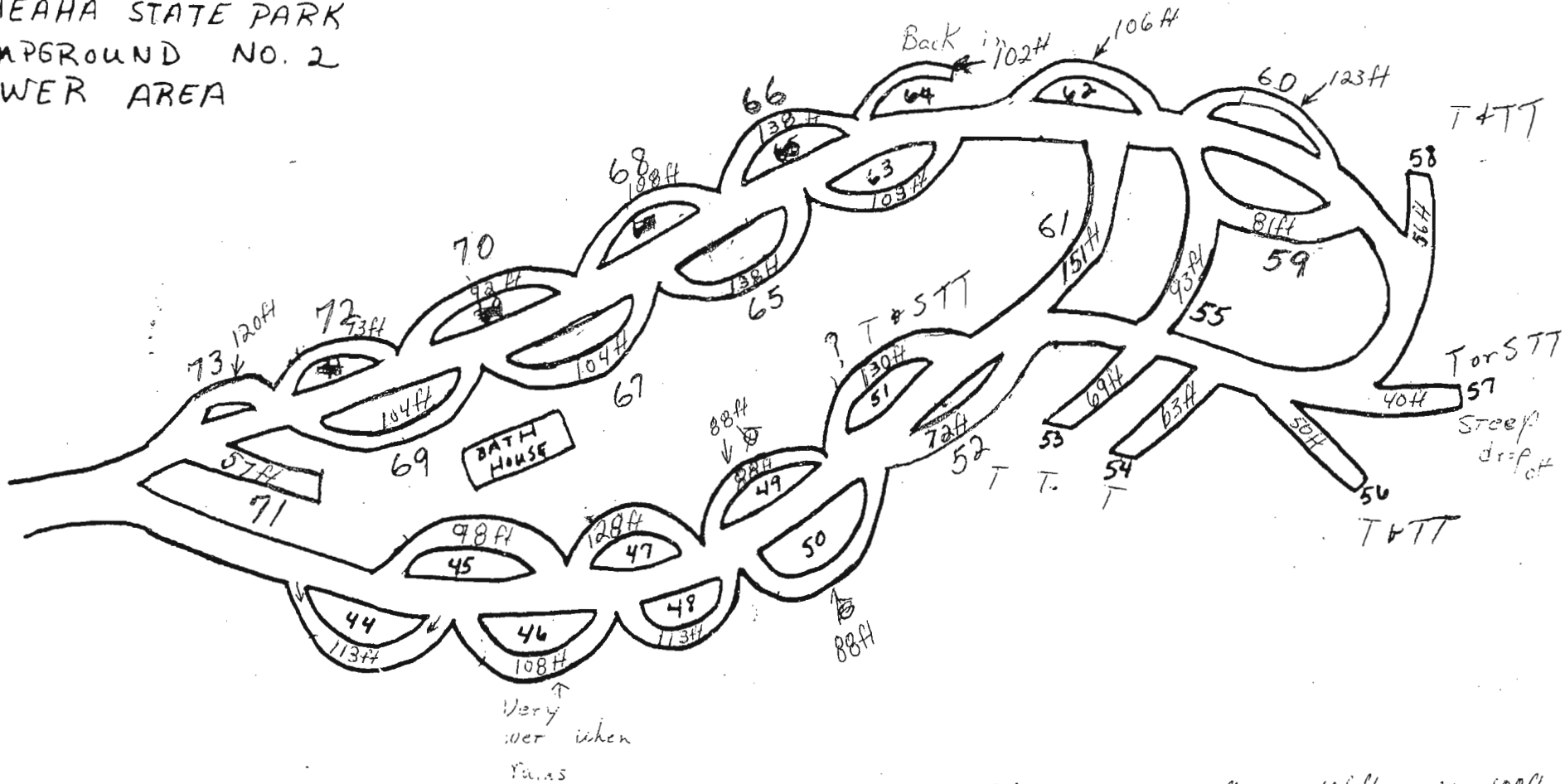
Thank you
Cheaha State Park

STATE PARK
CAMPGROUND NO. 1
MOUNTAIN TOP

Upper



CHEAHA STATE PARK
 CAMPGROUND NO. 2
 LOWER AREA

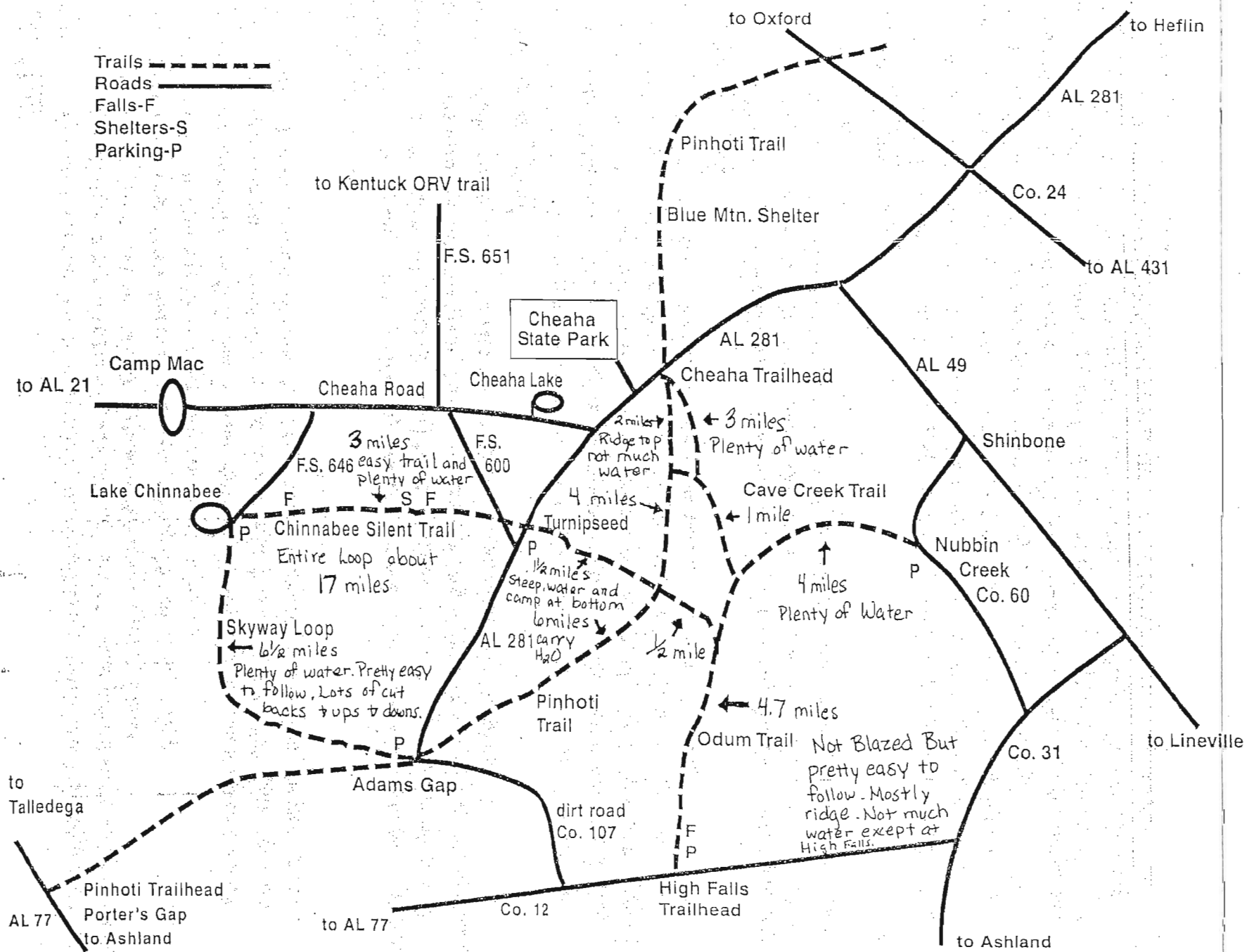


- | | | | | |
|----------|----------|----------|----------|----------|
| 44-113ft | 50-88ft | 56-50ft | 62-106ft | 68-108ft |
| 45-98ft | 51-130ft | 57-40ft | 63-103ft | 69-104ft |
| 46-108ft | 52-72ft | 58-56ft | 64-102ft | 70-92ft |
| 47-128ft | 53-69ft | 59-81ft | 65-138ft | 71-57ft |
| 48-113ft | 54-63ft | 60-123ft | 66-138ft | 72-73ft |
| 49-88ft | 55-93ft | 61-151ft | 67-104ft | 73-120ft |

51 not good for tent
 T - Small Travel Trailer
 T - Tent
 T - ~~Travel~~ Travel Trailer

↑
 Volunteer

* map not drawn to any scale or detail
* Distances are approximate



Hiking inside the National Forest

A short description of some of the hiking trails in the Talladega National Forest

Pinhoti Trail

Designated as a National Recreation Trail in 1977, this trail spans both the Talladega and the Shoal Creek Ranger Districts for a total of over 100 miles. Entrance points with parking include:

- 1) Porters Gap Trailhead on Hwy 77 between Talladega and Ashland
- 2) South of Cheaha State Park at the end of Hwy 281 at Adams Gap
- 3) Just inside Cheaha State Park at the Cheaha Trailhead.
- 4) Coleman Lake and Pine Glen Recreation Areas on the Shoal Creek Ranger District.

This trail frequently crosses Forest roads and can be hiked in sections, with some sections being more difficult than others. Blazing for this trail is a white turkey foot as well as some blue blazing.

Odom Scout Trail

The Odom Trail was originally built by the Boy Scouts in 1961. The trail runs from the High Falls trailhead on Co Rd 12 (Clairmont Springs Road) to near Caney Head in the Cheaha Wilderness Area where it ties into the Pinhoti trail. Total distance of the Odom Trail is 4.7 miles. Distance from the High Falls trailhead to Cheaha State Park is approximately 12 miles.

Nubbin Creek Trail

The Nubbin Creek Trail is a 4 mile trail that connects with the Odom and Cave Creek trails inside the Cheaha Wilderness Area. A trailhead parking area for this trail can be reached by taking Hwy 49 $\frac{1}{4}$ of a mile west of Union D Church onto a paved county road. This is the Nubbin Creek road and it changes from asphalt to gravel. The parking lot is about 3 miles from the church and is marked by a brown hiker sign just after you cross a small creek.

Cave Creek Trail

The Cave Creek Trail starts at the Cheaha Trailhead inside just inside Cheaha State Park. This trail is 4 miles long and connects with the Nubbin Creek Trail. There is also a short connector trail at about 3 miles that will connect with the Pinhoti trail. The Cave Creek Trail is not blazed but is usually well worn.

Chinnabee Silent Trail

The Chinnabee Silent Trail was named after a group from the Alabama Institute for the Deaf and Blind who were responsible for the construction of the trail. This trail runs from the Parking lot at Lake Chinnabee, up stream to the parking lot on Hwy 281 just 3 miles outside Cheaha State Park. The trail, from parking area to parking area, is approximately $3\frac{1}{2}$ miles. While hiking this trail, one will encounter two waterfalls and a shelter. Devils Den, one of the most popular waterfalls, is only a short $\frac{1}{2}$ mile hike from the trailhead at Lake Chinnabee, and Cheaha Falls is only $\frac{3}{4}$ of a mile from the parking area on Hwy 281. Cheaha Shelter, just above Cheaha Falls, is an opened faced wooden building with a fire pit that can accommodate any weary hiker along their journey.